



# SUBMITTAL FORM C-155/165 Anti-Siphon Angle Sill Faucets



JOB NAME \_\_\_\_\_

JOB LOCATION \_\_\_\_\_

PART NO# \_\_\_\_\_

ARCHITECT \_\_\_\_\_

ENGINEER \_\_\_\_\_

CONTRACTOR \_\_\_\_\_



## ■ FEATURES

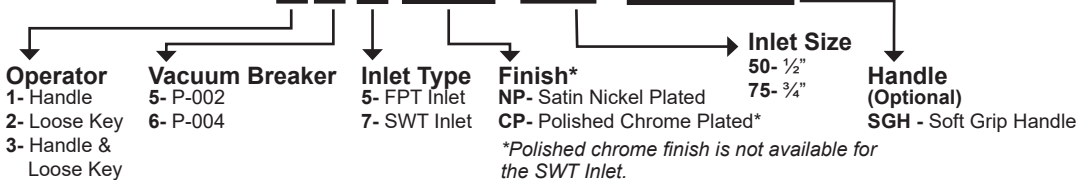
- C-155, C-255, and C-355 have a P-002 vacuum breaker backflow check valve approved under ASSE 1011
- C-165, C-265, and C-365 have a P-004 vacuum breaker backflow double check valve approved under ASSE 1052
- Heavy pattern cast brass construction with solid cast brass mounting flange with enclosed screw holes
- Powder coated aluminum metal handle or operating key on loose key vandal proof sill faucets

### Certifications

- ASSE 1011
- ASSE 1052
- C-UPC
- CSA B64.2

## ■ PART NUMBER

### Angle Sill Faucet Only C-165NP.50-SGH



**\*PLEASE NOTE:** C-157, C-167, C-257, C-267, C-357 and C-367 made for 3/4" sweat connections (SWT Inlet) with M Copper only.



C-155/C-165



C-255/C-265



C-355/C-365

### Optional Hydrant Box C-155BX1

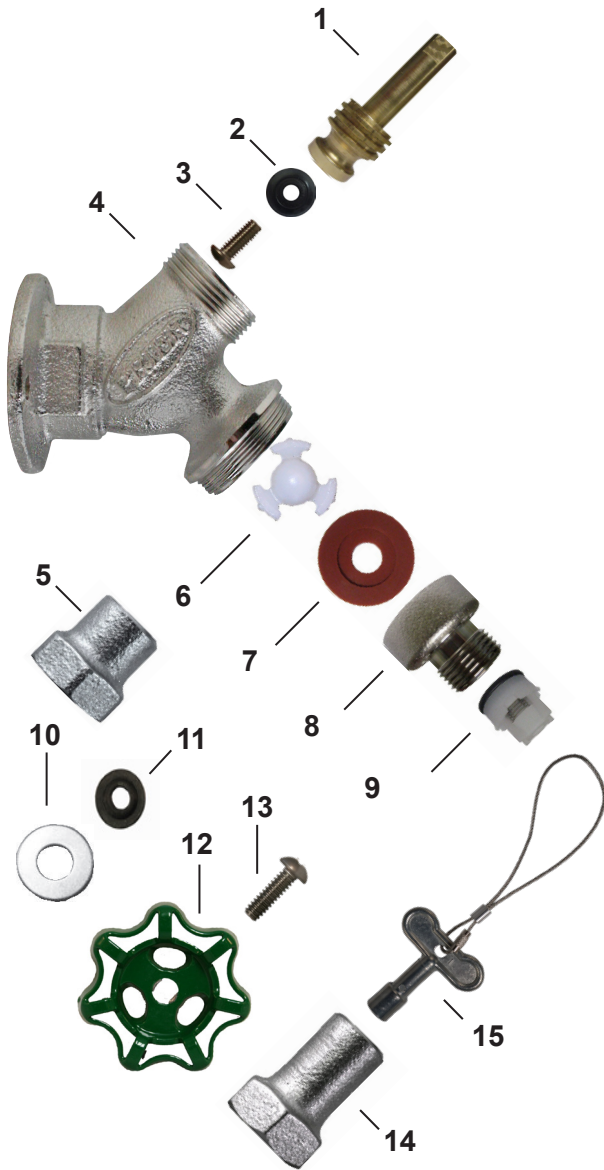


**Box Finish**  
1- Satin Nickel Plated  
2- Rough Brass



# SUBMITTAL FORM C-155/165 Anti-Siphon Angle Sill Faucets

## ■ MATERIALS



ID	PART	MATERIAL
1	Stem Body	Brass
2	Seat Washer	EPDM
3	Screw	Stainless Steel
4	Body	Brass
5	Valve Stem Cap	Brass
6	Check Spider	Acetal
7	Washer	Silicone
8	Hose Piece	Brass
9	Check Valve	Composite
10	Washer	Stainless Steel
11	Packing	Graphite
12	Handle	Aluminum
13	Screw	Stainless Steel
14	Extended Valve Stem Cap	Brass
15	Loose Key	Zinc

## ■ SPECIFICATIONS

Furnish and install Model C-155/255/365 or C-165/265/365 Heavy Pattern Anti-Siphon Angle Sill Faucet manufactured by PRIER Products, Inc. Sill Faucet shall be surface mounted and installed using optional 1/2" or 3/4" female NPT or 1/2" or 3/4" sweat inlet connections.

Sill Faucet shall be approved under ASSE 1011 standard with integral vacuum breaker / backflow preventor (Models C-155, C-255 or C-355) or Sill Faucet shall be approved under ASSE 1052 with integral vacuum breaker / double backflow preventor (Models C-165, C-265 or C-365). Sill Faucet shall flow 9 gallons per minute minimum at 25 PSI differential and be at full flow in 1 handle rotation. Sill Faucet shall have 3/4" hose connection, solid brass body with satin nickel or chrome finish, and brass operating rod. Options: Choose between Powder-coated Metal Handle (C-155 or C-165), Vandal Proof Sill Faucet with Loose Operating Key (C-255 or C-265), or both (C-355 or C-365).

Optional: Furnish and install flush-mount hydrant box for each valve. Hydrant box shall be manufactured of solid cast brass with a rough brass or satin nickel plated finish. Box may be installed separately and Sill Faucet be insertable and removable from front of the box. Access to the box shall be provided by the Vandal Proof Operating Key.