



SUBMITTAL FORM C-633 Commercial Wall Hydrant

JOB NAME _____

JOB LOCATION _____

PART NO# _____

ARCHITECT _____

ENGINEER _____

CONTRACTOR _____

FEATURES

- Patented PRIER "Triple Seal" positive shutoff system offers triple redundancy to assure shutoff
- Integral P-004B Vacuum Breaker and Dual Check Valve
- High flow rate, 16 gallons per minute at 25 PSI differential
- Tested to 250,000 cycles; designed to last the life of the plumbing system
- C-633NSV inlet can be rotated any direction to simplify installation

Certifications

- ASSE 1052
- C-UPC
- CSA B64.2
- ASME B1.20.1

PART NUMBER

Wall Hydrant Only

C-633N

Inlet

- N- 1" MPT x 3/4" FPT
- P- 1" Male SWT x 3/4" Female SWT
- V- 3/4" ProPress Ready

**P and V inlets only available with CC length*

Swivel

SV- 360° Swivel

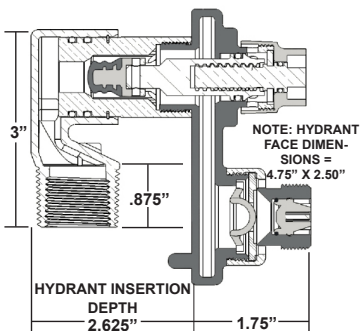
C-634 Gasket

Included with all C-634 hydrant boxes

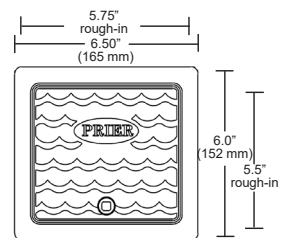
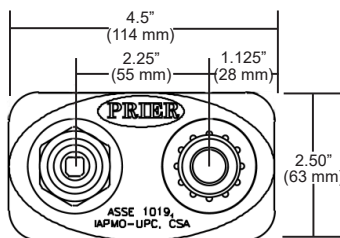
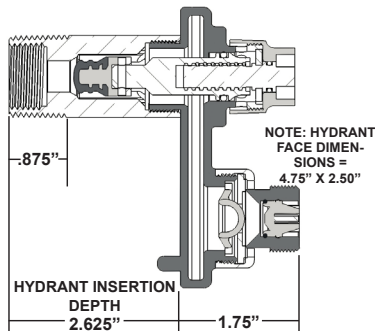


DIMENSIONS

C-633NSV (360° Swivel)



C-633NCC (Straight)



Optional Hydrant Box

C-634BX1



Box Finish

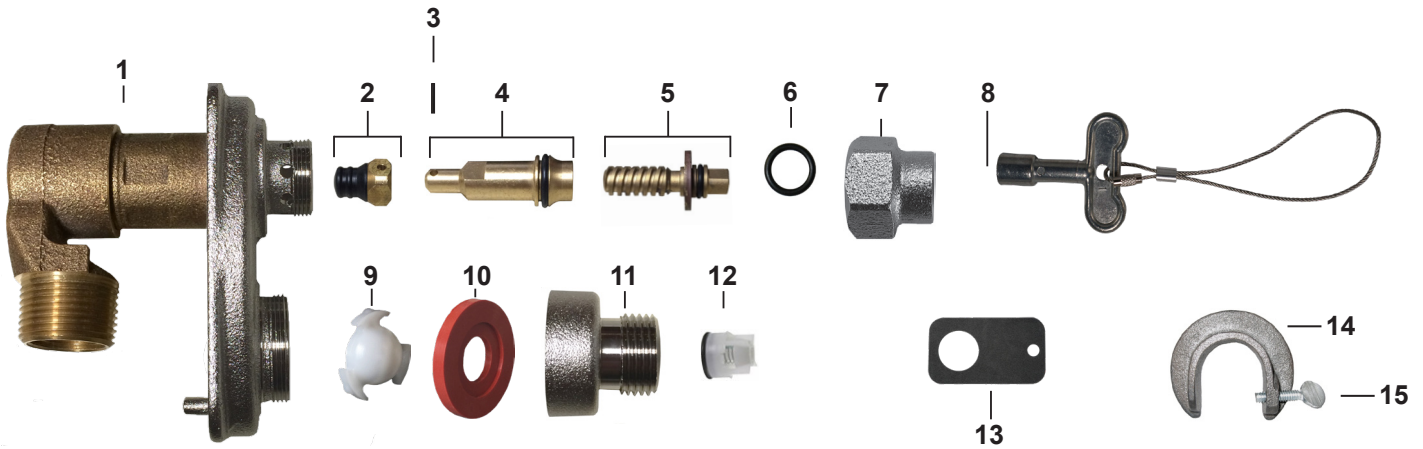
- BX1- Satin Nickel Plated
- BX2- Rough Brass
- BX3- Aluminum
- RB1- Round Box (Satin Nickel Plated)





SUBMITTAL FORM C-633 Commercial Wall Hydrant

■ MATERIALS



ID	PART	MATERIAL	ID	PART	MATERIAL
1	Body	Brass	9	Check Spider	Acetal
2	Stopper	Brass and Rubber	10	Diaphragm Washer	Silicone
3	Stopper Pin	Stainless Steel	11	Hose Piece	Brass
4	Worm Sleeve	Brass	12	Check Valve	Composite
5	Worm Drive	Brass	13	Gasket	XLPE
6	O-Ring	EPDM	14	Wall Clamping Ring	Cast Iron
7	Valve Stem Cap	Brass	15	Thumb Screw	Steel
8	Loose Key	Zinc			

■ SPECIFICATIONS

Furnish and install (choose C-633NSV Model or C-633NCC Model) commercial key operated wall hydrant manufactured by PRIER Products, Inc. Hydrant shall be surface mounted and shall have automatic draining capabilities with integral vacuum breaker/double backflow preventer. Hydrant shall be capable of flowing a minimum of 16 gallons per minute at 25 PSI differential. Hydrant shaft shall be brass with double connections. Hydrant shall have (choose 3/4" or 1") hose connection with self draining functions, one piece valve plunger, satin nickel finish, brass operating rod with positive triple-seal shutoff mechanism. Hydrant shall be approved under ASSE 1052 standards. Operating key with lanyard to be furnished with each hydrant. Hydrant insertion to be specified as C-633NCC (straight with 3/4" FPT x 1" MPT connections), C-633PCC (straight with 3/4" x 1" sweat connections), C-633VCC (straight with 3/4" press-ready connection) or C-633NSV (360° swivel with 3/4" FPT x 1" MPT connections).

Optional: Furnish and install flush-mount hydrant box for each valve. Hydrant box shall be manufactured of solid cast brass or aluminum with a rough brass, satin nickel plated brass or aluminum (choose one) finish. Box shape may be round or square and round box only comes with satin nickel finish. Box may be installed separately and hydrant be insertable and removable from front of the box. Access to the hydrant box shall be provided by the same operating key as the valve. A gasket shall be installed between the box and hydrant to prevent water intrusion into the structure.