



SUBMITTAL FORM

P-754 Commercial Hot & Cold Wall Hydrant

JOB NAME _____

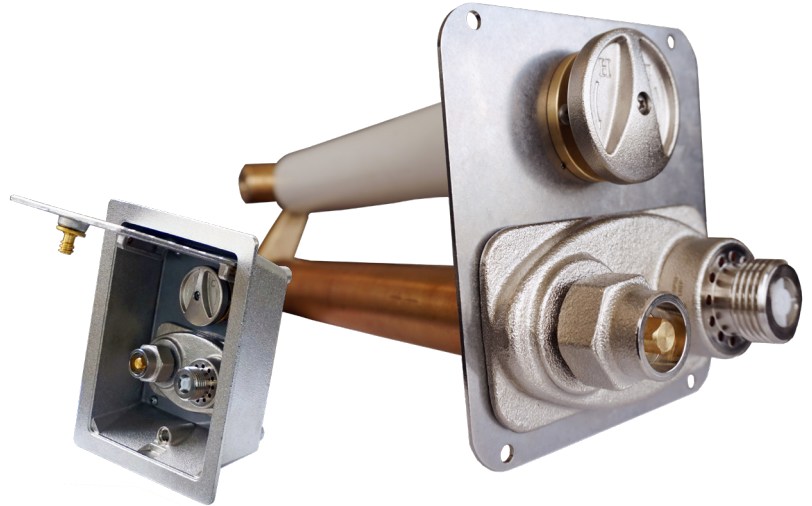
JOB LOCATION _____

PART NO# _____

ARCHITECT _____

ENGINEER _____

CONTRACTOR _____



FEATURES

- Field testable as required by ASSE 1052, pressure rated to 125 PSI, temperature to 140°
- Integral P-004B Vacuum Breaker and Dual Backflow Preventer
- Patented PRIER "triple seal" positive shutoff system offers triple redundancy to assure shutoff
- High flow rate, 16 gallons per minute at 25 PSI differential
- Single control temperature dial

Certifications

- ASSE 1052
- C-UPC
- CSA B64.2
- ASME B1.20.1

PART NUMBER

Wall Hydrant Only
P-754M10

Hose Thread Outlet	Inlet	Length	
4- 3/4" Garden Hose	M- 3/4" MPT	CC- Close Coupled	16- 16" Insertion
6- 1" Hose		04- 4" Insertion	18- 18" Insertion
		06- 6" Insertion	20- 20" Insertion
		08- 8" Insertion	22- 22" Insertion
		10- 10" Insertion	24- 24" Insertion
		12- 12" Insertion	XX- Special Size
		14- 14" Insertion	

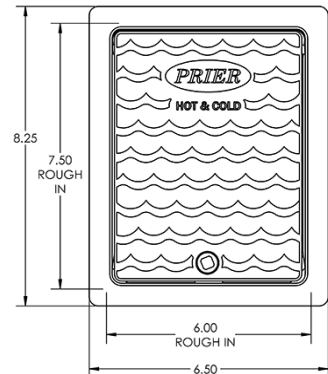
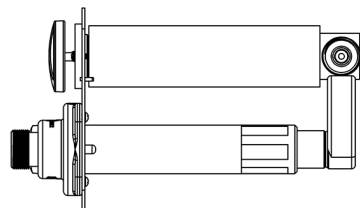
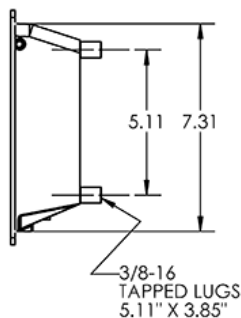
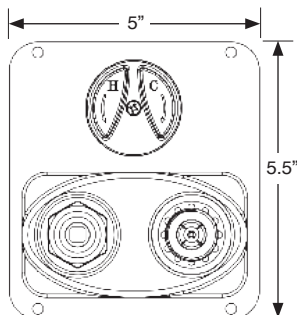
Optional Hydrant Box

P-754BX1



Box Finish
BX1- Satin Nickel Plated

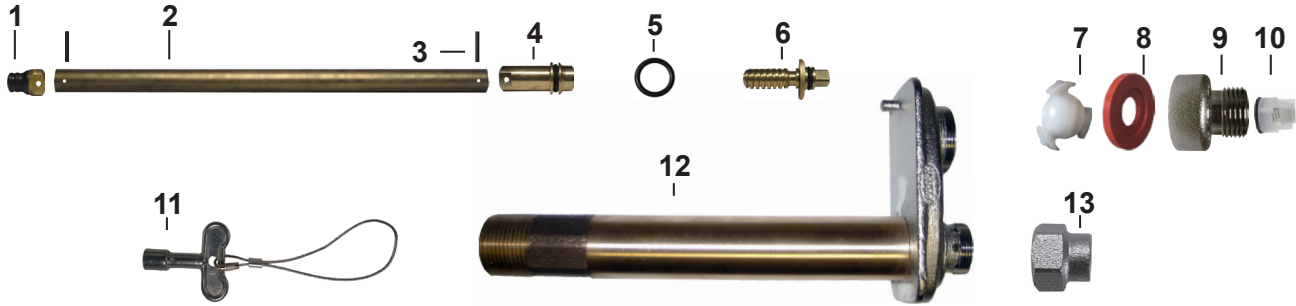
DIMENSIONS





SUBMITTAL FORM P-754 Commercial Hot & Cold Wall Hydrant

■ MATERIALS



ID	PART	MATERIAL	ID	PART	MATERIAL
1	Stopper	Brass and Rubber	8	Washer	Silicone
2	Stem	Brass	9	Hose Piece	Brass
3	Stopper Pin	Stainless Steel	10	Check Valve	Composite
4	Worm Sleeve	Brass	11	Loose Key	Zinc
5	O-Ring	EPDM	12	Body	Brass
6	Worm Drive	Brass	13	Valve Stem Cap	Brass
7	Check Spider	Acetal			

■ SPECIFICATIONS

Furnish and install Model P-754 Heavy Commercial Wall Hydrant manufactured by PRIER Products, Inc. Hydrant shall have automatic draining capabilities with integral vacuum breaker/double backflow preventer. Hydrant shall flow 16 gallons per minute minimum at 25 PSI Differential and be at full flow in 2 handle rotations. Hydrant shaft shall be brass with threaded and sealed connections. Hydrant shall have 3/4" or 1" (choose one) hose connection with freezeless water flow and self-draining functions, one piece valve plunger, satin nickel finish, brass operating rod with positive triple seal shutoff mechanism. Hydrant shall be approved under ASSE 1052 standard. Operating key to be furnished with each hydrant. Hydrant insertion length to be x inches. (Close Coupled to 24" in 2" increments.)

Optional: Furnish and install flush-mount hydrant box for each valve. Hydrant box shall be manufactured of solid cast brass. Box may be installed separately and hydrant be insertable and removable from front of the box. Access to the hydrant box shall be provided by the same operating key as the valve.