



4515 East 139th Street  
 Grandview, MO 64030  
 (800) 362-9055  
 Fax (800) 362-1463  
 www.PRIER.com

## Anti-Siphon Angle Sill Faucets

Application

*With Integral P-002 Vacuum Breaker*



- Commercial
- Anti-Siphon
- Backflow Check Valve
- Optional Hydrant Box



PRIER's anti-siphon angle sill faucets are designed for areas that require water service with an anti-siphon backflow check valve connection, but are not subject to freezing temperatures. Typical installations include outdoor connections in mild climates or any indoor installation for residential, commercial, institutional and industrial applications. The heavy pattern design with solid brass stem assures years of reliable service with minimal maintenance. The faucets also have a powder coated non-ferrous metal handle or operating key on loose key vandalproof sill faucets. An optional valve box is available in either satin nickel or brass finish.

Features

- Heavy pattern cast brass construction with solid cast brass mounting flange with enclosed screw holes
- Optional heavy patterned casted brass valve box in satin nickel or brass finish
- Satin nickel plated or polished chrome body
- Powder coated non-ferrous metal handle or operating key on loose key vandalproof sill faucets
- Stainless steel seat washer screw and handle screw
- Full circle ACME threads on stem assembly with standard 1/4" L size seat washer
- Lock shield cap
- AFG teflon with graphite packing
- P-002 vacuum breaker backflow check valve approved under ASSE 1011

Ordering

**Angle Sill Faucet Only**

**C-155NP.50**

**Operator**  
 1- Handle  
 2- Loose Key  
 3- Handle & Loose Key

**Inlet Type**  
 5- FPT Inlet  
 7- SWT Inlet

**Finish**  
 NP- Satin Nickel Plated  
 CP- Polished Chrome Plated\*  
 \*C-157, C-257 and C-357 not available in polished chrome finish

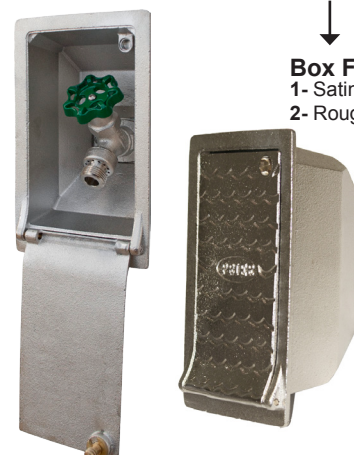
**Inlet Size**  
 50- 1/2"  
 75- 3/4"



**Optional Hydrant Box**

**C-155BX1**

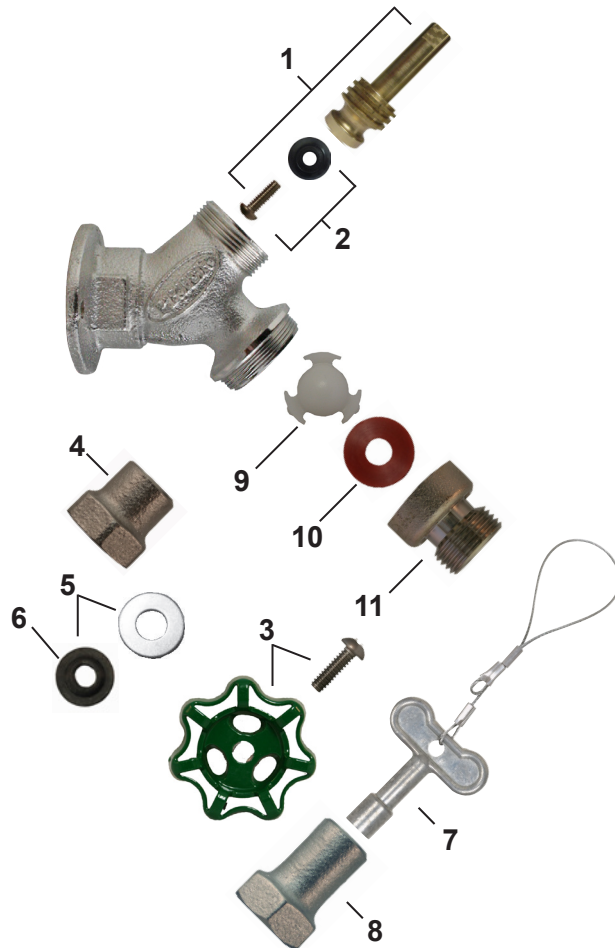
**Box Finish**  
 1- Satin Nickel Plated  
 2- Rough Brass





4515 East 139th Street  
 Grandview, MO 64030  
 (800) 362-9055  
 Fax (800) 362-1463  
 www.PRIER.com

**Replacement Parts**



ID	Part No.	Description
1	231-0001	Stem Assembly (Brass) Rod
2	C-135KT-802	1/4" Beveled Seat Washer Kit
3	C-134KT-805	Handle and Screw Kit (Aluminum Lacquered Green)
	C-135KT-805	Handle and Screw Kit (Polished Chrome Plated Aluminum)
4	300-1008	Valve Stem Cap (Nickel Plated)
	300-1013	Valve Stem Cap (Polished Chrome Plated)
5	C-134KT-803	Stem Packing Kit
6	390-1001	Packing Only
7	C-108KT-808	Loose Key on Lanyard
8	310-1015	Extended Valve Stem Cap (Nickel Plated)
	310-1019	Extended Valve Stem Cap (Polished Chrome Plated)
9	337-0002	Check Spider (Acetal)
10	336-0006	Stepped Washer (Silicone)
11	310-0018	Vacuum Breaker Hose Piece
	C-434KT-906	Vacuum Breaker Assembly, Contains: 9, 10, 11
	C-134KT-804	Loose Key Conversion Kit, Contains: 5, 7, 8