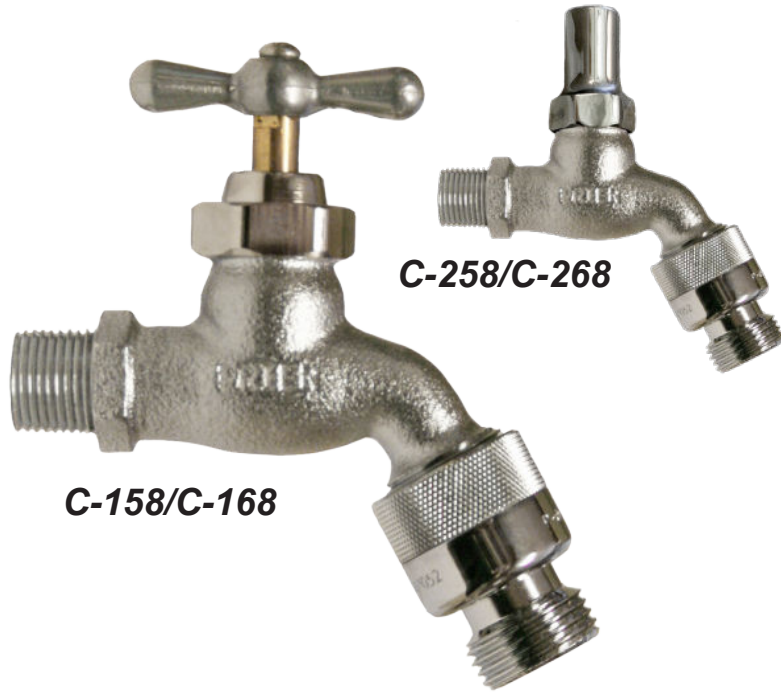




C-158/258 Heavy Pattern Anti-Siphon Hose Bibbs



With Integral P-002 Vacuum Breaker or Integral P-004 Double Check Vacuum Breaker

PRIER anti-siphon hose bibbs are designed for areas that require water with an anti-siphon backflow check valve connection, but are not subject to freezing temperatures. Typical installations include outdoor connections in mild climates or any indoor installation for residential, commercial, institutional and industrial applications.

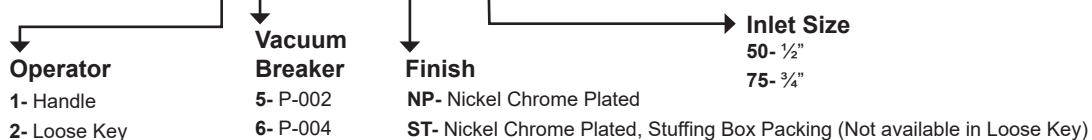
- Commercial
- Anti-Siphon
- Backflow Check Valve
- Chrome Nickel Finish

FEATURES

- Heavy pattern cast brass construction available in 1/2" or 3/4" inlets
- Nickel chrome finish
- Vandal proof lock shield cap on C-258 and C-268 model
- Diecast aluminum t-handle or operating key on vandal-proof loose key hose bibbs
- Stainless steel seat washer screw and handle screw
- Full circle ACME threads on stem assembly with standard 1/4" L size seat washer
- AFG teflon with graphite packing
- C-158 and C-258 have a P-002 vacuum breaker backflow check valve approved under ASSE 1011, pressure rated to 125 PSI, temperature to 180°F
- C-168 and C-268 have a P-004 vacuum breaker backflow double check valve approved under ASSE 1052, pressure rated to 125 PSI, temperature to 140°F

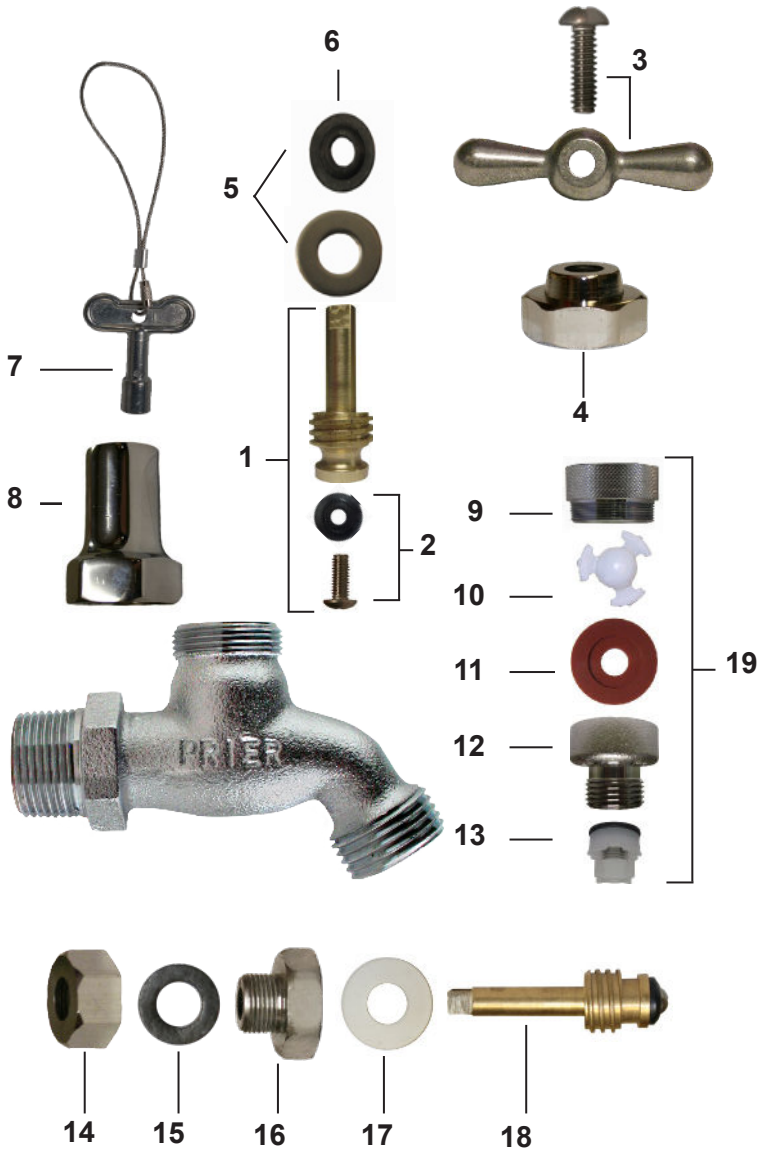
ORDERING

C-168NP.50





C-158/258, C-168/268 REPLACEMENT PARTS



ID	Part No.	Description
1	231-0001	Stem Assembly, Rod (Brass)
2	C-134KT-802	Seat Washer Kit, 1/4" Beveled
3	C-138KT-801	T-Handle and Screw Kit
4	310-1012	Valve Stem Cap
5	C-134KT-803	Stem Packing Kit
6	390-1001	Packing Only
7	C-108KT-808	Loose Key on Lanyard
8	310-1019	Extended Valve Stem Cap (Polished Chrome)
9	310-0023	P-004 Adapter
10	337-0002	Check Spider (Acetal)
11	336-0006	Stepped Washer (Silicone)
12	310-0022	Vacuum Breaker Hose Piece
13	399-0001	Check Valve
14	310-0006	Stuffing Box (C-168ST)
15	393-0001	Stuffing Box Packing (C-168ST)
16	310-0005	Packing Nut (C-168ST)
17	390-0001	Packing Spacer (C-168ST)
18	231-0002	Stem Assembly (C-168ST)
19	P-004CP	Hose End Vacuum Breaker (C-168, C-268)
20	P-002CP	Hose End Vacuum Breaker, Contains: 9, 10, 11, 12 (C-158, C-258)
	C-434KT-906	Vacuum Breaker Assembly, Contains: 10, 11, 12
	C-134KT-804	Loose Key Conversion Kit, Contains: 5, 7, 8

SPECS

Furnish and install Model C-158/258 or C-168/268 Heavy Pattern Anti-Siphon Hose Bibb manufactured by PRIER Products, Inc. Hose Bibb shall be approved under ASSE 1011 standard with integral vacuum breaker / backflow preventor (Models C-158 or C-258) or Hose Bibb shall be approved under ASSE 1052 with integral vacuum breaker / double backflow preventor (Models C-168 or C-268). Hose Bibb shall flow 9 gallons per minute minimum at 25 PSI differential and be at full flow in 1 handle rotation. Hose Bibb shall have 3/4" hose connection, chromium nickel finish, and brass operating rod. Options: Choose between T-Handle (C-158 or C-168) or Vandal Proof Hose Bibb with Loose Operating Key (C-258 or C-268). Also choose between 1/2" or 3/4" male NPT inlet connections.